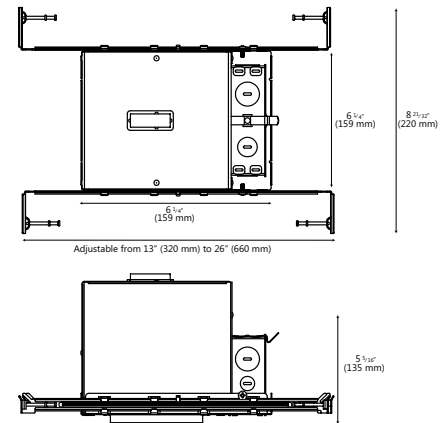
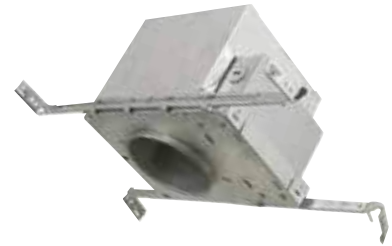


## ORDERING INFORMATION

Order code: 62681  
 Description: RF4in/NC/IC/GU10/STD  
 UPC: 69549626812  
 Case quantity: 4

## SPECIFICATIONS

Type: New Construction - IC  
 Housing material: Industrial-strength galvanized steel  
 Can diameter: 4" (102 mm)  
 Cutting hole diameter: 4 1/4" (108 mm)  
 Sockets: GU10  
 Volts (V): 120  
 Thermal protection: Yes  
 Junction box: Yes  
 Wire to wire connectors: Yes  
 Airtight: Yes



WARRANTY  
EXTENDED WARRANTY

INDOOR

DAMP

MAX. LAMP  
WATTAGE

AIRTIGHT  
HOUSING

C US

\*For complete warranty information please visit [www.standardpro.com](http://www.standardpro.com)

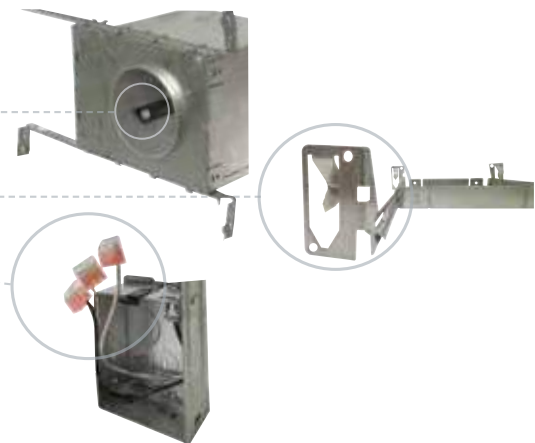
Max. of 4 no. 12 AWG through branch circuit conductor suitable for 90°C permitted in box.

## COMPATIBLE LAMPS AND TRIMS

Compatible lamps	Max Wattage (W)	Compatible STANDARD trims
Halogen or LED MR16 (GU10)	35	62730, 62731, 62732, 62733, 62734, 62735, 62736, 62738, 62740
	50	62704, 62706, 62708, 62712, 62716, 62718, 62720, 62722, 62723, 62724, 62725, 62754, 62755, 62756

## INSTALLATION

- Screw adjusting system
- Permits the installation in ceilings up to 1 1/4 in. in thickness
- Suitable for double drywall application
- Hanger bars included with built in spikes
- Wire to wire connectors



## CAUTIONS

- Turn power off before inspection, installation, or removal
- Risk of electric shock – do not use where directly exposed to water or weather
- Risk of fire. Blinking light of this thermally protected fixture may indicate overheating
- Minimum 90 °C supply conductor
- May be interconnected using the same circuit
- Use with STANDARD trims only