



New Scepter® F-Series Double Gang Boxes & Covers.... A Perfect Fit!

Boxes & Covers Universally Compatible

Scepter F-Series double gang boxes, weatherproof covers and cover plates have all been re-designed with universal product compatibility in mind, giving contractors greater ease of installation and cost savings on the job site.

Boxes

The FSU and FDU blank gang boxes are up to 1" deeper than other manufacturers' double gang boxes, allowing for increased space for installation of receptacles and switches. And, the FSU-Series boxes molded with 1" conduit hubs are shipped with 3/4" and 1/2" reducer bushings to accommodate various sizes of conduit.



FSU double gang boxes and covers are CSA certified to CSA C22.2 No. 18.2-06 and C22.2 No. 85-M89 and to UL standard 514C.

Covers

All the weatherproof covers have been designed to ensure a watertight seal using a new foam gasket, with an adhesive layer for ease of installation.

The VSRCU20-2 and VSDRU20-2 weatherproof covers feature a plunger-style switch, making them ideal for high torque, motor rated switches and repeated use in harsh and cold weather environments. The plunger-style switch also has the capability to be locked into the OFF position to avoid accidental switching.



FEATURES AND BENEFITS:

- Universal compatibility
- Extra depth of boxes
- Threaded brass inserts for ease of cover installation
- Hub size reducer bushings included to accommodate various job site requirements
- Unique plunger-style design
- One box for all conduit sizes



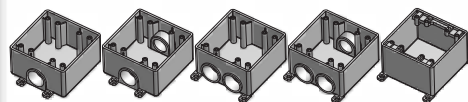
Products are manufactured by IPEX Electrical Inc.

Canadian Customers call IPEX Electrical Inc.

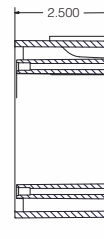
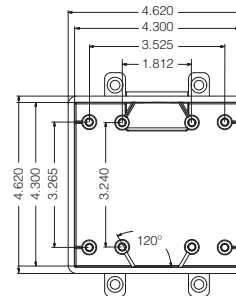
Toll Free: (866) 473-9462

www.ipexelectrical.com

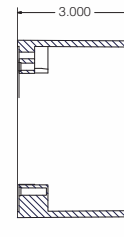
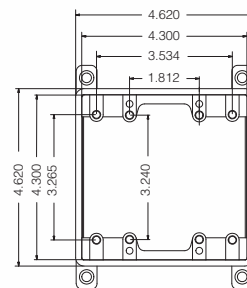
BOXES



Old Part Number	Old Product Code	New Part Number	New Product Code	Hub Sizes (inches)
FS-2-101520	077440	FSU-2-101520	077364	1/2, 3/4, 1
FSC-2-101520	077441	FSCU-2-101520	077368	
FSS-2-101520	077442	FSSU-2-101520	077372	
FSCC-2-101520	077443	FSCCU-2-101520	077369	
FD-2	077734	FDU-2	077649	Blank

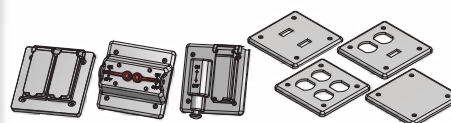


FSU - Box

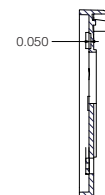
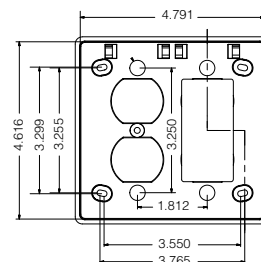


FDU - Box

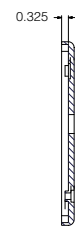
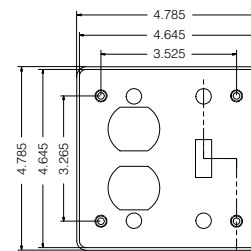
COVERS



Old Part Number	Old Product Code	New Part Number	New Product Code	Description
* VSGG20-2	077096	SAME AS OLD		Double Door GFI Cover
* VSDD20-2	077097	SAME AS OLD		Double Door Duplex Cover
* VSC20-2	077741	VSCU20-2	077376	Toggle Switch Cover
* VSRC20-2	077742	VSRCU20-2	077357	Combination Switch Cover & GFI Receptacle
* VSDR20-2	077752	VSDRU20-2	077356	Combination Switch Cover & Duplex Receptacle
TSC20-2	077738	TSCU20-2	077373	Double Switch
TSDC20-2	077739	TSDCU20-2	077374	Combination Switch Duplex Receptacle
DRC20-2	077740	DRCU20-2	077362	Double Duplex Receptacle
* BRC20-2	077614	BRCU20-2	077359	Blank Cover c/w Gasket



VSGG & VSDD Covers



TSDC Cover Plate

* indicates weatherproof cover



GASKETS

Old Part Number	Old Product Code	New Part Number	New Product Code	Description
GASKV20-2	072227	SAME AS OLD		Gasket for VSGG20-2 & VSDD20-2
-	-	GASKFU20-2	172650	Foam Gasket with adhesive layer