

ORDERING INFORMATION

Order code: 58986
 Description: FC12T9/CW/RS/4P/STD
 UPC: 69549589865
 Case quantity: 24

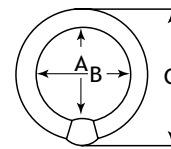


Nominal diameter : 12 in. (305 mm) Dia. : 1 3/16 in. (30 mm)

PERFORMANCE DATA

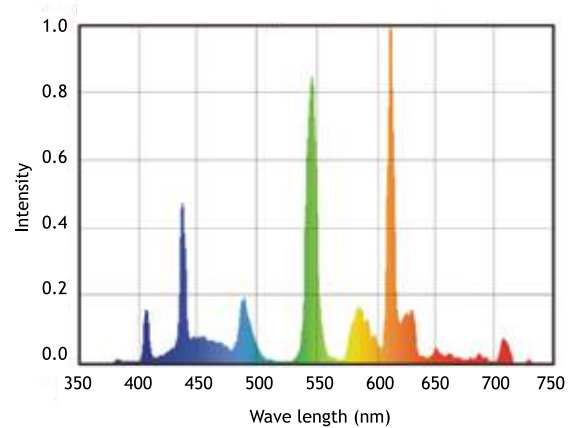
Shape: T9
 Base: G10q-4
 Starting method: Rapid Start (RS)
 Wattage (W): 32
 Colour temperature (K): 4 100
 CRI: 82
 Rated life on IS¹ ballast: 10 000
 Based on a 3 hour start
 Initial lumens (lm): 2 300
 Mean lumens (lm): 2 185
 Nominal efficiency (lm/W): 72
 TCLP compliant: Yes
 Phosphor composition: Triphosphor
 Nominal lamp operating frequency (Hz): 60
² Minimum starting temperature (°C): -10

DIMENSIONS



A Max	B Min / Max	C Max
Inner diameter from base to tube	Inner diameter from tube to tube	Outer overall diameter from base to tube
9.64 in. 245.0 mm	9.42 in./ 9.54 in. 237.5 mm/ 242.5 mm	11.83 in./ 300.5 mm

SPECTRAL DISTRIBUTION



¹ The life rating indicated is based on 3 hour burning cycles under specified conditions and with ballast meeting ANSI specifications.

² The minimum starting temperature is a function of the ballast. The minimum starting temperature is based on a STANDARD brand T9 Circline ballast.

