

4' LINEAR VAPOURPROOF FIXTURE

Designed for versatility with NEMA 4X, NSF and IK10 ratings, ideal for demanding environments

LFY4-LED

Wattage selectable with lumen control, the LFY4 is a **modern** vapour tight fixture designed for contractor friendly installation.



LED40A20	LED60A40
6400/4300/2800 lm	9100/7500/6000 lm
145 lm/W	150 lm/W
5.0 lbs	
SPD: 2kV	CRI: 81



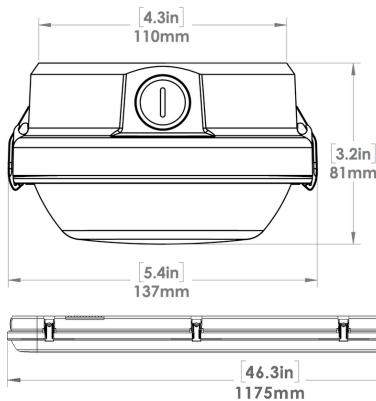
Flat housing back

Guide marks for drill holes

Hanging LED tray & lens assembly

EFFORTLESS INSTALLATION

Streamlined design with a simple two-component assembly



- Smaller cross section with a wider mounting surface

FW4-LED

Trusted to withstand harsh conditions, the FW4 is a **classic** vapour tight fixture engineered to provide long-lasting performance.



LED41	LED61
5700 lm	8500 lm
140 lm/W	
7.5 lbs	
SPD: 4kV	CRI: 85



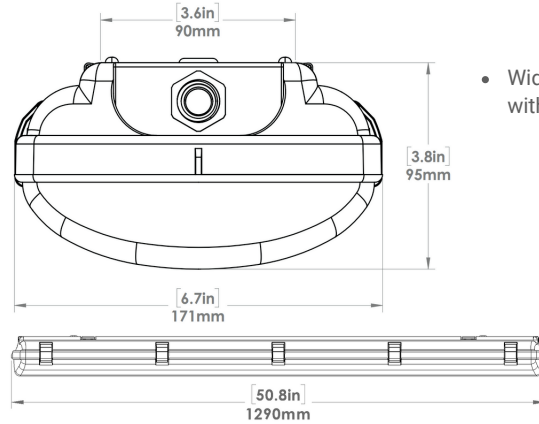
Predrilled conduit entries

Wide lens optics with smooth curvature

Hanging LED tray & driver

EASY INSTALLATION

Efficient design with a smart three-component assembly

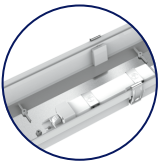
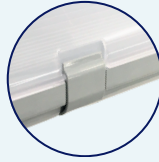
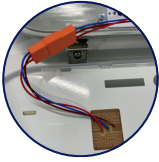


- Wider cross section with a larger lens

UNIQUE FEATURES

LFY4

FW4



Stainless Steel Clips x8 engineered to prevent fall off (Optional tamper proof clips)

Quick Disconnect between driver and LED tray

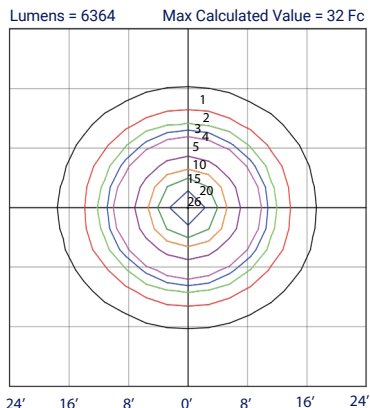
Polycarbonate Clips x10 (Optional stainless steel clips)

Offset driver location from the center to facilitate easier installation

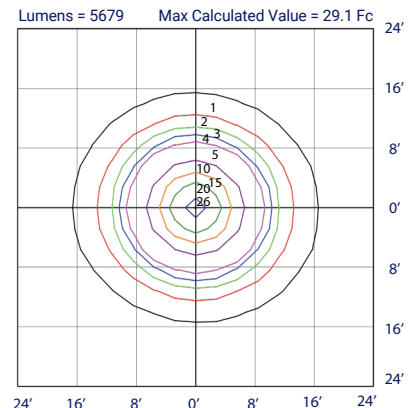
Cover for CCT and Lumen switches to eliminate the risk of accidental setting changes

Quick Disconnect between input power source and driver

LFY4-LED40A20-H-VK-DIM (40W 4000K 120V)
MOUNTED AT 8 FEET



FW4-LED41-H-VK-DIM (40W 4000K 120V)
MOUNTED AT 8 FEET



4' LINEAR VAPOURPROOF FIXTURE

Designed for versatility with NEMA 4X, NSF and IK10 ratings, ideal for demanding environments

LFY4-LED

Wattage selectable with lumen control, the LFY4 is a **modern** vapour tight fixture designed for contractor friendly installation.



LED40A20

6400/4300/2800 lm

145 lm/W

LED60A40

9100/7500/6000 lm

150 lm/W

SPD: 2kV

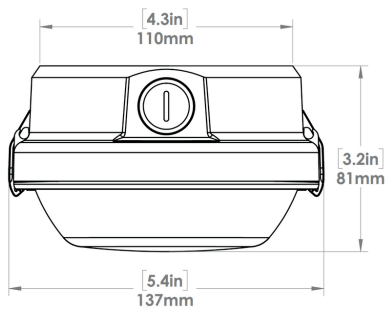
CRI: 81



Flat housing back

Guide marks for drill holes

Hanging LED tray & lens assembly



- Smaller cross section with a wider mounting surface

FW4-LED

Trusted to withstand harsh conditions, the FW4 is a **classic** vapour tight fixture engineered to provide long-lasting performance.



LED41

5700 lm

LED61

8500 lm

140 lm/W

SPD: 4kV

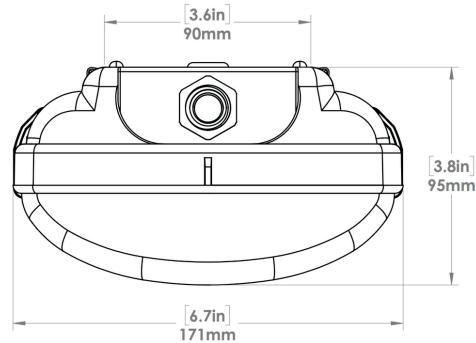
CRI: 85



Predrilled conduit entries

Wide lens optics with smooth curvature

Hanging LED tray & driver

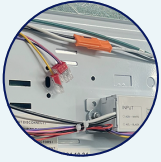
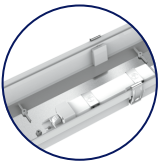
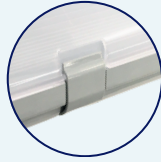
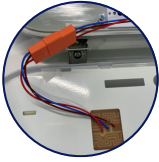


- Wider cross section with a larger lens

UNIQUE FEATURES

LFY4

FW4



Stainless Steel Clips x8 engineered to prevent fall off (Optional tamper proof clips)

Quick Disconnect between driver and LED tray

Polycarbonate Clips x10 (Optional stainless steel clips)

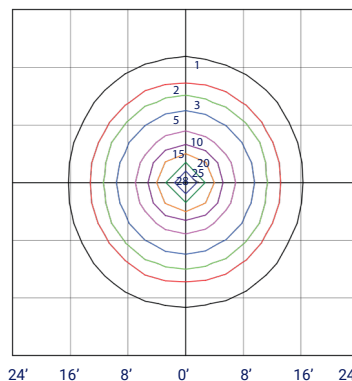
Offset driver location from the center to facilitate easier installation

Cover for CCT and Lumen switches to eliminate the risk of accidental setting changes

Quick Disconnect between input power source and driver

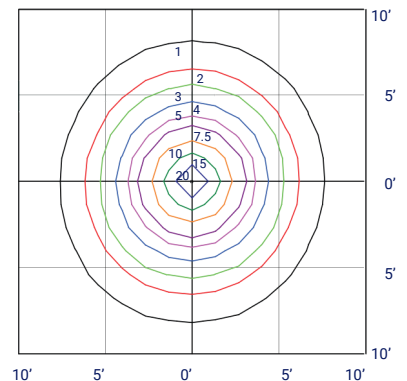
LFY4-LED40A20-H-VK-DIM (5000K 120V) MOUNTED AT 8 FEET

LUMENS 6035 MAX CALCULATED VALUE 30.35Fc



FW4-LED41-H-VK-DIM (5000K 120V) MOUNTED AT 8 FEET

LUMENS 5499 MAX CALCULATED VALUE 28.16Fc



4' LINEAR VAPOURPROOF FIXTURE

Designed for versatility with NEMA 4X, NSF and IK10 ratings, ideal for demanding environments

LFY4-LED

Wattage selectable with lumen control, the LFY4 is a **modern** vapour tight fixture designed for contractor friendly installation.



LED40A20

6400/4300/2800 lm

145 lm/W

LED60A40

9100/7500/6000 lm

150 lm/W

SPD: 2kV

CRI: 81



Flat housing back

Guide marks for drill holes

Hanging LED tray + lens assembly

FW4-LED

Trusted to withstand harsh conditions, the FW4 is a **classic** vapour tight fixture engineered to provide long-lasting performance.



LED41

5700 lm

LED61

8500 lm

140 lm/W

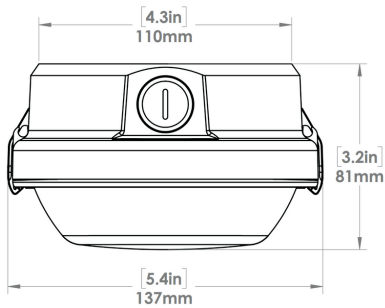
SPD: 4kV

CRI: 85

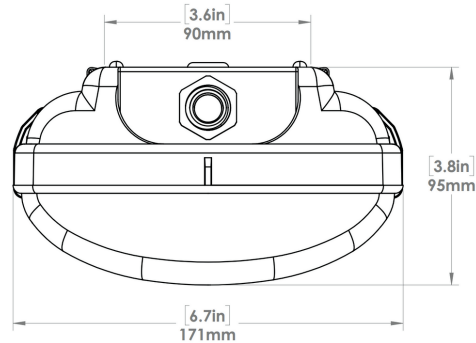


Predrilled conduit entries

Wide lens optics with smooth curvature



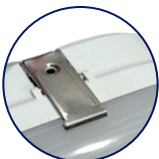
- Smaller cross section with a wider mounting surface



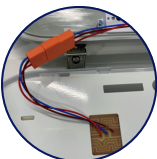
- Wider cross section with a larger lens

UNIQUE FEATURES

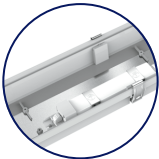
LFY4



Stainless Steel Clips x8



Quick Disconnect

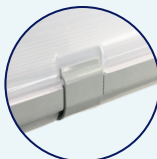


Offset Driver Location



Cover for CCT & Lumen Switches

FW4



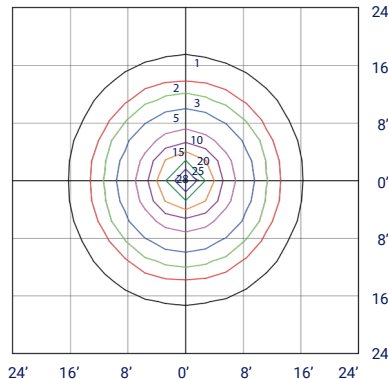
Polycarbonate Clips x10



Large Lens Curvature

LFY4-LED40A20-H-VK-DIM (5000K 120V) MOUNTED AT 8 FEET

LUMENS 6035 MAX CALCULATED VALUE 30.35Fc



FW4-LED41-H-VK-DIM (5000K 120V) MOUNTED AT 8 FEET

LUMENS 5499 MAX CALCULATED VALUE 28.16Fc

